

Industrial Dump Trailers



6 Tonne Industrial Dump Trailer



7 Tonne Industrial Dump Trailer



10 Tonne Industrial Dump Trailer



12 Tonne Industrial Dump Trailer



14 Tonne Industrial Dump Trailer

The AW Industrial Dump Trailers have a scow-ended body built from 6mm (1/4") thick plate supported by wide side channels. They have strong wide parallel chassis built from RHS or PFC and high specification running gear. The tandem axle models can be fitted with either sprung or bogie suspension. There are 6½ Tonne, 7 Tonne, 8 Tonne, 10 Tonne, 12 Tonne and 14 Tonne models available. There is also a 16 Tonne Industrial Dump Trailer available in our high spec *Ultima* range.

Standard Industrial Dump Trailer Features :-

- Hydraulic Tipping
- Hydraulic Brakes
- Commercial Ratchet type Park Brake
- Full Road Lighting
- Inspection Steps
- Rope Hooks
- Removable Drawbar Skid
- RHS Box Top on 10 Tonne model & above
- Heavy Duty Heat Treated Hitch Eye

Optional Extras Available include :-

- Sprung Drawbar
- Manual Tailboard
- Hydraulic Tailboard
- Various Tyre Upgrades
- Extension Sides
- High Speed Running Gear
- Air Brakes c/w Load Sensing

Industrial Dump Trailer Suspension Options :-

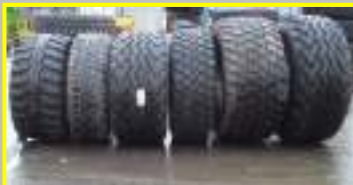


Sprung Axles Beam axles with heavy duty multi-leaf semi-elliptical sprung suspension for a smoother ride and reduced tyre wear



Bogie Axles Stub axles with 'rocking beam' suspension complete with 60mm diameter chrome pivot pin and bronze bushes

Industrial Dump Trailer Optional Extras :-



Tyre Upgrades (many options available including Flotation tyres)



Sprung Drawbar



Hydraulic Tailboard (contractor type_

Extension Sides

Upgrade to *Wilson* spec

6½ Tonne, 7 Tonne & 8 Tonne Industrial Dump Trailers

	6½ Tonne Industrial Dump (single axle)		7 Tonne Industrial Dump (tandem axle)		8 Tonne Industrial Dump (tandem axle)	
Body length	3630mm	11' 11"	3630mm	11' 11"	4210mm	13' 8"
Body width	2210mm	7' 3"	2210mm	7' 3"	2210mm	7' 3"
Body height	610mm	2'	610mm	2'	610mm	2'
Floor thickness	6mm		6mm		6mm	
Side thickness	6mm		6mm		6mm	
Chassis	180 x 75 PFC		180 x 75 PFC		250 x 150 RHS	
Axle size	80mm 6 stud (single)		70mm 6 stud (tandem)		70mm 6 stud (tandem)	
Brake size	300 x 60mm		300 x 60mm		300 x 60mm	
Wheel track	2000mm	6' 6¾"	2000mm	6' 6¾"	2000mm	6' 6¾"
Tyre size	12.5/80 x 15.3 14 ply		11.5/80 x 15.3 10 ply		12.5/80 x 15.3 14 ply	
Cubic capacity	4.4m ³	155ft ³	4.4m ³	155ft ³	5.1m ³	180ft ³
o/a length	5050mm	16' 7"	5050mm	16' 7"	5740mm	18' 8"
o/a width	2440mm	8'	2440mm	8'	2440mm	8'
o/a height	1520mm	5'	1520mm	5'	1730mm	5' 8"
Max tipped height	4280mm	14' 1"	4400mm	14' 5"	4980mm	16' 4"
Unladen weight	1.6 Tonne approx		1.9 Tonne approx		2.2 Tonne approx	

10 Tonne, 12 Tonne & 14 Tonne Industrial Dump Trailers

	10 Tonne Industrial Dump (tandem axle)		12 Tonne Industrial Dump (tandem axle)		14 Tonne Industrial Dump (tandem axle)	
Body length	4210mm	13' 8"	4490mm	14' 9"	4720mm	15' 6"
Body width	2210mm	7' 3"	2210mm	7' 3"	2210mm	7' 3"
Body height	730mm	2' 5"	730mm	2' 5"	915mm	3'
Floor thickness	6mm		6mm		6mm	
Side thickness	6mm		6mm		6mm	
Chassis	250 x 150 RHS		250 x 150 RHS		250 x 150 RHS	
Axle size (tandem)	80mm 8 stud		90mm 10 stud commercial		90mm 10 stud commercial	
Brake size	350 x 60mm		406 x 120mm		406 x 120mm	
Wheel track	2000mm	6' 6¾"	2000mm	6' 6¾"	2000mm	6' 6¾"
Tyre size	385/65R22.5 'super single'		385/65R22.5 'super single'		385/65R22.5 'super single'	
Cubic capacity	5.6m ³	200ft ³	6.1m ³	215ft ³	9.2m ³	320ft ³
o/a length	5740mm	18' 8"	6060mm	19' 10"	6150mm	20' 2"
o/a width	2440mm	8'	2440mm	8'	2440mm	8'
o/a height	1980mm	6' 6"	1980mm	6' 6"	2210mm	7' 3"
Max tipped height	5160mm	16' 11"	5790mm	19'	5850mm	19' 2"
Unladen weight	2.6 Tonne approx		3.0 Tonne approx		4.1 Tonne approx	